

Corporate Profile



About Mazada Group and wings :

Founded in the year 2001. Although it was small but it was very sincere and serious with a dedicated group of young and energetic professional, who were determined to reach at the top level as service provider in various sectors viz. heavy construction equipment, Crane, Port Equipment, Automobile supplier, Power Generation Equipment supplier, Generator, EPC & Turnkey Project handling, Infrastructure, Land & Property Development, Inland Road and Water Transport service provider, Heavy Lifting & Haulage, Shipping Agency business, Ship Sale & Purchase, Ship chartering, Ship manning etc etc.

Over this short period, we have grown remarkably as independent and internationally tuned business organization with links in many parts of the world. We could jump to this stage due to our selection of professionals in the respective fields who have vast experience and outstanding achievements.

Mazada Group provides services / solves problems with innovative solutions and state of the art technology and thus we could build reputation in the local and international market.



Mazada Consortium Limited

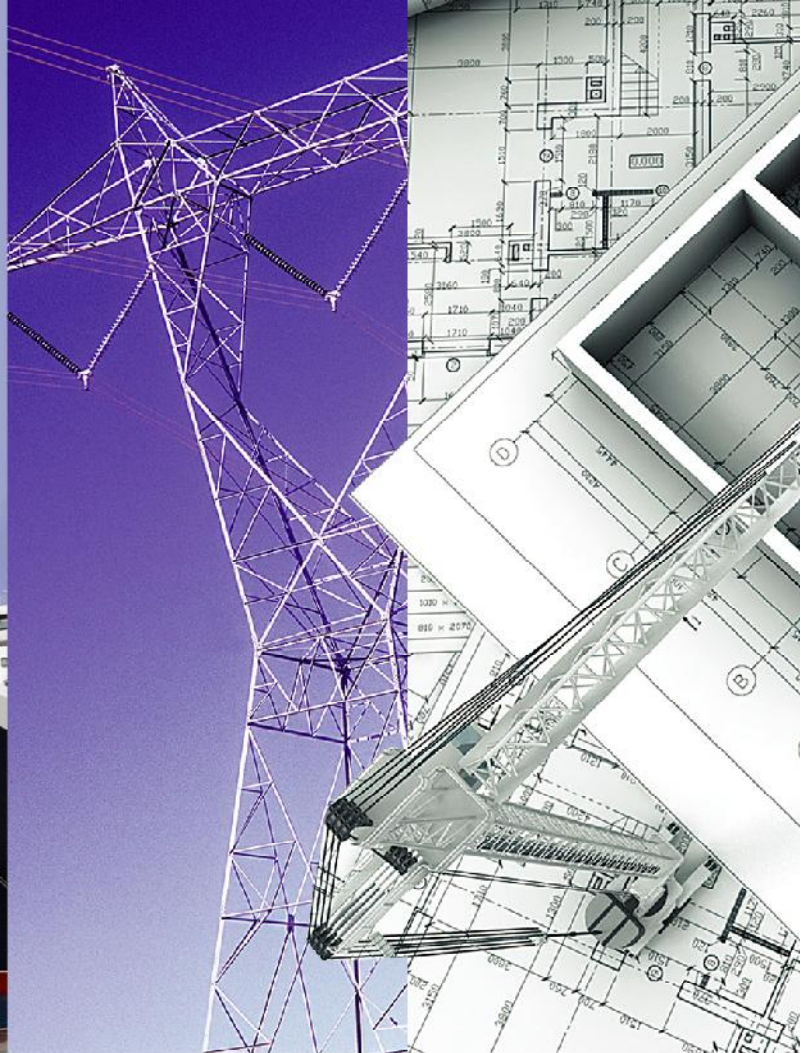
Construction Equipment, Crane, Port
Equipment, Automobile, Heavy Lifting &
Haulage, Trading, Sales, Service, Rent, Spare



Mazada Power Limited

Power Generator,
Power Generation Plant-EPC, O&M,
Spare Parts for Power Plant





**Mazada
Shipping Line Limited**
Shipping Agent, Ship Sale & Purchase for
Demolition, Ship Chartering, Logistic
Service, Freight Forwarding, Customs



**Mazada
Landmark Limited**
Real Estate, Construction, Property &
Infrastructure Development





Mazada Consortium Limited

Construction Equipment, Crane, Port Equipment, Automobile, Heavy Lifting & Haulage, Trading, Sales, Service, Rent, Spare Parts etc.



Mazada Power Limited

Power Generator, Power Generation Plant-EPC, O&M, Spare Parts for Power Plant



Mazada Shipping Line Limited

Shipping Agent, Ship Sale & Purchase for Demolition, Ship Chartering, Logistic Service, Freight Forwarding, Customs Brokerage



Mazada Landmark Limited

Real Estate, Construction Property & Infrastructure Development



The Management

01. Rejaul Karim Sohel
Managing Director and CEO



Obtained Master of Commerce Degree from the Government City College under National University in the year 1998 and started his carrier as a businessman. An energetic Young man, a good entrepreneur, with good commercial background and inter communication skill.

He is engaged with Mazada Group since inception of the group and has been managing local market as well as sourcing and international marketing of the group. He has well connection in the elite business circle in Bangladesh.

Cell : +88-01713-160059
Tel : +880-31-2865313 to 5, Ext. 101
e-mail : rejaul@mazadagroup.com

02. Shamsun Nahar
Director

Obtained Master of Commerce Degree from the Government Commerce College under National University in the year 2000 and has been managing business successfully since inception of Mazada Group. Also a self motivated business personnel.

Tel : +880-31-2865313 to 5, Ext. 102
e-mail : nahar@mazadagroup.com

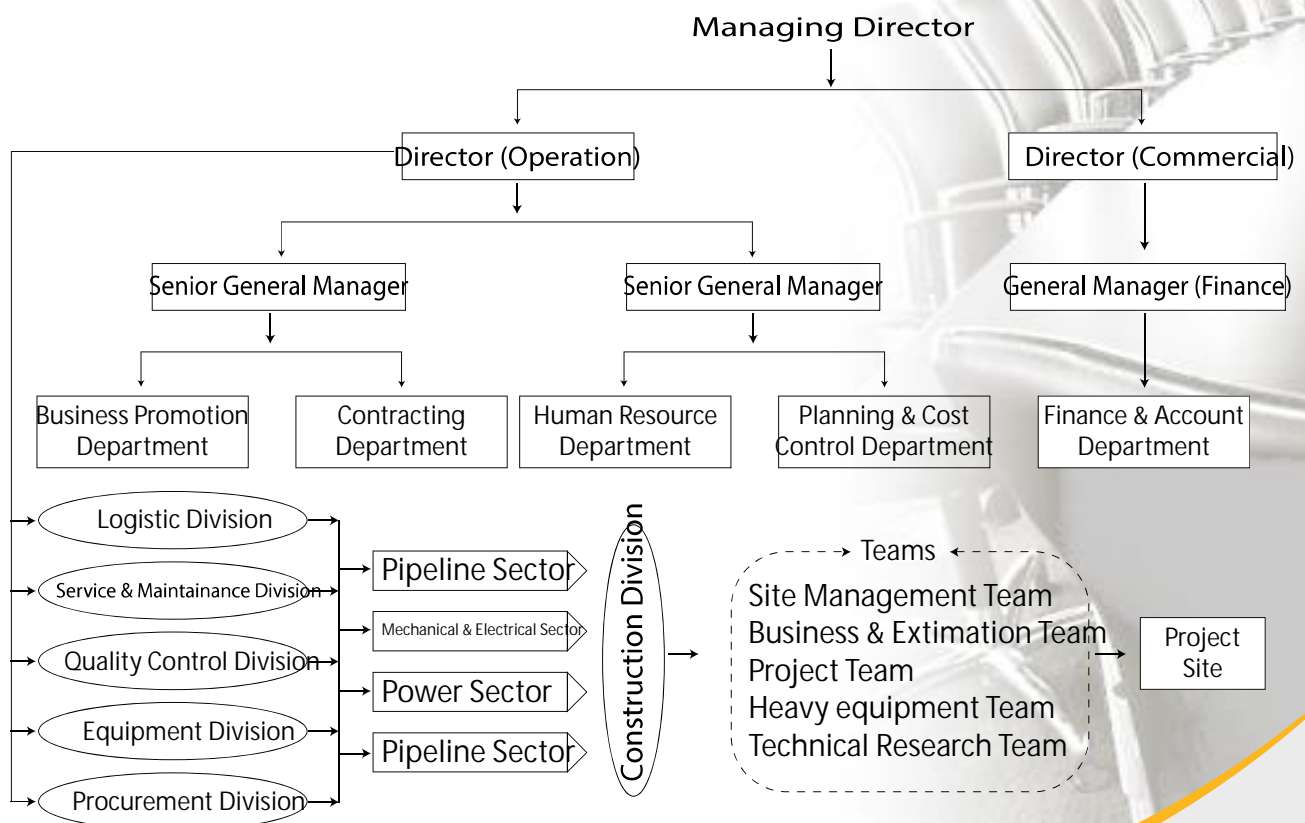


Organization

Mazada and its sister concerns have more than one hundred staff members and contract employees in various projects. Mazada is organized into Four (4) independently-managed operating divisions. Workforce Distribution of the divisions is as follows

Divisions	Staffs
1. Logistics Division	10
2. Services & Maintenance Division	15
3. Safety & Quality Control Division	05
4. Equipment Division	50
5. Procurement Division	10
6. Construction Division	20
7. Engineering Division	30

Board of Director



Over the years, **Mazada** is the one-stop integrated service solution provider in Bangladesh for Infrastructure, Oil & Gas, Petrochemical, Power Plant and Construction industries. **Mazada** look forward to explore our scope of work with professional eyes, where Health, Safety & Environment is first priority.

Scope *of Works*



General Sector (Rent, Sales & Service)

- w Construction Machineries
- w Heavy Cranes
- w Material Handling Equipment's
- w Port Handling Equipment's
- w Commercial Vehicles, LowBed Trailer
- w Power Generator (Diesel, HFO& Gas)
- w Industrial Machineries, Compressors
- w Spare Parts



Oil & Gas Sector

- w Oil & Gas Field Drilling Rigs Mobilization & Transportation
- w Mechanical Engineering, Erection, Installation & Fabrication
- w Pipeline Construction, Gas Process Plant, Rigs Repair
- w Oil & Gas Field Equipment's, Meter, Safety Materials & Spare Parts Supply
- w Man Power Supply



Power Generation Sector

- w Mechanical Engineering, Erection & Fabrication
- w Power Plant Engine Transportation & Installation
- w Pipeline Works, Tank Fabrication
- w Engineering, Equipment & Supply (EES)
- w Operation & Maintenance (O & M)
- w Spare Parts Supply



Shipping Sector

- w Shipping Agent
- w Clearing Forwarding Agent
- w Ship SNP & Ship Chartering
- w Logistic, Offshore & Marine Service
- w Heavy Cargo Lifting & Haulage (Road, Marine & Inland Transport)
- w Turn Key Project Promoter



Mazada Consortium Limited

Your Partner for Success...

The inception of Mazada Consortium Limited was in the year 2001 as one of the leading Indentor of Construction Equipment, heavy-duty crane, Port Equipments, Forklift Truck, Automobiles. Also importer of Heavy Machinery, Cranes and other Haulage and Marine Equipments. We support various sectors viz. Oil, Gas and Petroleum Sector, Power Generation Sector, Construction Sector, specialized solution providers for infrastructure development and Industrial Sector etc. Under the strong leadership and far-sighted vision of our management team, we have been meeting the needs of our growing pool.

Our trading business, which complements our equipment Import & supply business, involves not only the distribution and trading of both new and used equipment but also undertake storage and distribution of spare parts as well as servicing of the equipment to make Mazada Corporation as one stop service center for all our customers' needs. We have stockyard & strong sales network all over the country.

Over the years, Mazada Consortium Limited is the one-stop integrated service solution provider in Bangladesh for Infrastructure, Oil & Gas, Petrochemical, Power and Construction industries. We specialize in Heavy Lift, Heavy Haulage, On shore & Marine service, total logistic and a fabrication yard. We have grown beyond being a Crane, Heavy Equipments, Low Bed Trailer, Barge Rental Company to a diversified service provider for heavy lift and haulage, process equipment installation and Road & Marine transportation. Mazada Corporation has built up a strong reputation for best-in-class services and top-quality delivery through successful execution of numerous projects. The promising outlook in the booming Oil, Gas and Power, Construction industries, an able management team, inherent strengths in our core business and focused strategies will allow us to take advantage of the vast opportunities in the market and position our company strongly for future growth.





Equipments Sales & Service:

Mazada Consortium Limited was built on the trading of new, recondition & used Cranes, Construction Equipment, Port Equipments, Railway Equipments, Marine Equipments, vehicles etc. With nearly 11 years of experience in this field, we are able to fully understand your requirements and work with you to package the best-suited products and service support for all your needs.

Our rich heritage has also earned us exclusive distributorships with numerous world-renowned equipment brands from Japan, Europe and the United States of America, banking on decades of trusted track record and reliability.

With an establish network of workshops, our team of experienced and well trained service technicians are ever-ready to provide professional after sales service to our customers

Our business activities are as follows :

- Importer, seller & supplier of Heavy Construction Equipments, Cranes, vehicles, Port Equipments, Container Handling Equipment, Oil & Gas Field Equipments, Railway Equipments, Industrial Machineries.
- Low Bed Trailer, Crane, Construction Equipments, Barge rental service provider.
- Project/ Heavy Lift Cargo Handling & Haulage works. Transportation by Road, Rail and River.
- Contractor for Power, Energy, Oil & Gas Sector
- International Tender Project & Turn key project promoter.
- Plam Oil, Bulk Commodity, Petroleum Products & Chemical trading.
- Indenter, Import, Export and Trading.
- Manufacturer Representative & Marketing agent.



Cranes & Equipments Lease

Today, we are able to provide comprehensive custom- fitted rental service solutions to suit each of our customer's needs with an expanded fleet such as Crawler Cranes, Hydraulic Truck Crane, Rough Terrain Crane, Mechanical Truck Crane, Tower crane, Overhead Crane, Pick & Carry Crane, Hydraulic Excavator, Backhoe Loader, Bulldozer, Wheel Loader, Road Roller, Motor Grader,



Asphalt Finisher, Pick up, Cargo Truck, Dump Truck, Prime Mover, Mixer Truck, Tipper Truck, Forklift Truck, Talehandler, Aerial Work Platform, Reach Stacker, Hydraulic Boring Rigs, Low bed & high bed Trailer, Concrete Pump, Batching Plant, Air Compressor, Diesel Welding Machine, Tig Welding Machine, High pressure Hydrostatic Machine, Electric Vibratory Hammer, Sky Lift, Mud pumps, Holiday detector, Cutting & Beveling Machine, Internal Pneumatic Clamps, Power Generator, Pipe Bending Machine, Barge & Tag boat etc.

To us, safety and quality is imperative for total customer satisfaction. As such, we set operational benchmarks and quality control procedures to maintain our

Spare Parts :

As one of the reliable spare parts stockiest in our county, we are highly regarded by our customers for our capability to meet their timely requirements. We have been awarded distributorships for numerous renowned brands. Our extensive stoke range does cover your requirements.



Heavy Lifting & Haulage :

Mazada Consortium Limited has provided comprehensive Heavy Lift and Haulage solutions to various industries. We have established a resounding reputation in the field through participation in several mega projects. Today our heavy lifting and haulage division is synonymous with safety, efficiency, cost-effectiveness and reliability.

We specialize in Turnkey Heavy Lift & Haulage solutions including engineering and execution, Provision of engineering services, Project and site management, Rigging and crane erection, Jacking and skidding and equipment installation services.

Today, we are renowned for our Heavy Lifting, Heavy Haulage and Mechanical Equipments installation works. Our diverse track record remains strong through our continuous participation in notable projects spanning industries such as petrochemical, pharmaceutical, power generation plant, offshore fabrication, oil & gas sector. We are confident of meeting your every need with the support of our extensive fleet portfolio, which includes Crane, Hydraulic Modular Trailer, Multi-axle Trailer, Prime Mover, Barge & Tag boat etc.

Leveraging on our comprehensive lift and haulage solutions supported by a diversified fleet portfolio, we are ready to take your lifting & haulage solutions anywhere in the country.



Project & Contracting :

Mazada Consortium Limited specializes in the project management of integrated engineering works. Providing total and complete engineering solutions to each customer's requirement and specifications. Partnered internally with various divisions within Mazada Corporation, we provide one stop solutions for Heavy Equipments Installation Projects, Heavy Haulage, Marine Transportation, Inland Transportation, Installation of Process Equipments, Alignment and Grouting, Heavy Modules Load Out, Installation of GTG Power Plants, Engineering, Fabrication and Erection of Derrick Structure, Plant Maintenance & Shut down activities.

Our on shore and marine service division is in is a joint venture between our group and world wide equipment, a specialized provider of marine vessels, tug & barge with varying size and capacities. Located strategically, complete with private waterfront, jetty facilities and concrete ramps, our marine service is well sought out by clients.

Our facilities, enable us to take on any jobs specifications, from Roll On/ Off (RORO) operations, lifting oversize cargos and steel module structures on to the barges, make us the perfect complement.



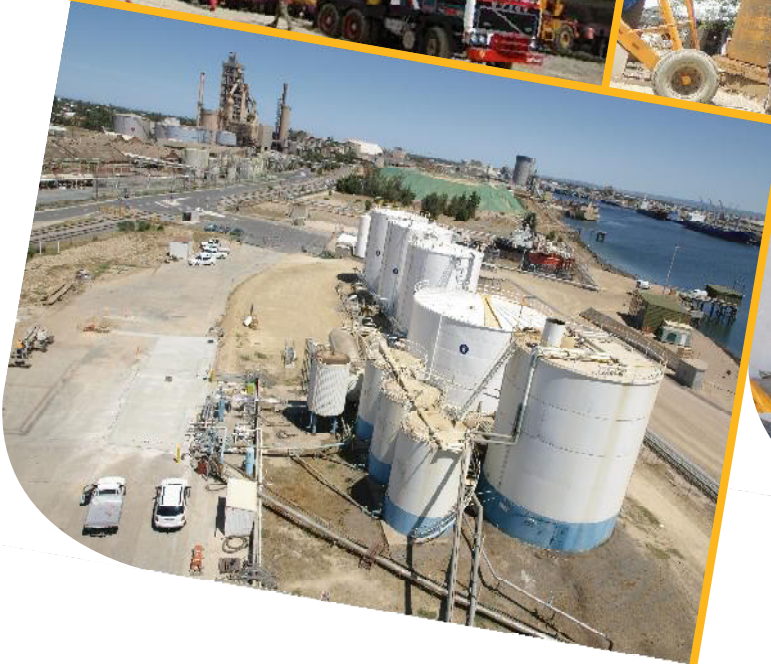
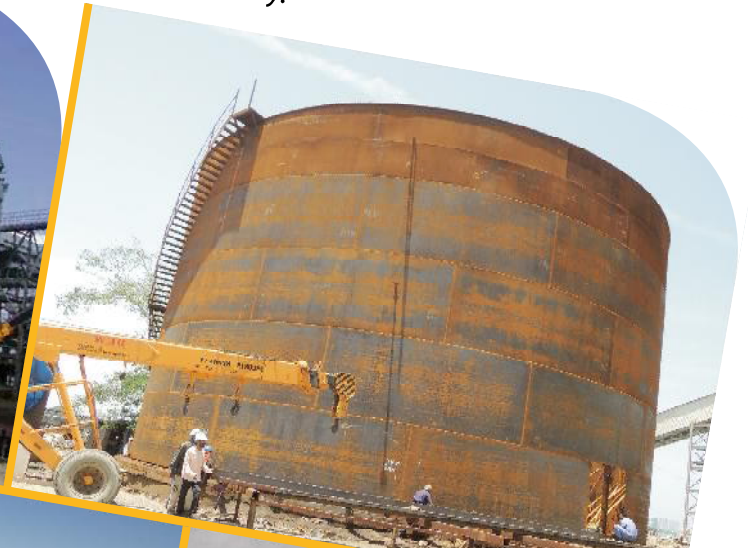
Fabrication & Engineering

Fabrication & Engineering :

Mazada Consortium Limited is an integrated engineering and fabrication provider of the marine, offshore, oil & gas industry. Our principal activities are to provide one-stop engineering, project management and fabrication solutions for our clients through delivering timely, high quality and innovative solution service.

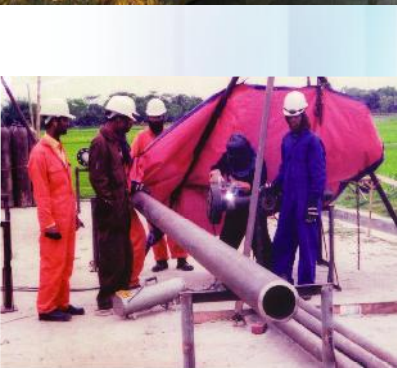
Our team of experience professional and skilled personnel with vast knowledge from the marine, offshore, oil & gas industry are passionate about quality, standard and safety and ensure that the client's project everything the client specified and envision. Our continuous training and education of our workforce shows our commitment to develop the skills, knowledge and expertise of our people.

We are continually upgrading our facilities and improving our management system in order to stay competitive and provide service excellence to our client's in this fast-track technology industry.



Our Capabilities :

- Construction of Off shore Jackets, Platforms, Sub sea Manifolds and Pipeline Tie-In Spools.
- Construction of Topside Modules for FPSO & FSO conversion
- Gas Regulating and Metering Stations
- Gas Processing Plants, Compressor Station
- Off shore and Onshore Gas Field Support Facilities i.e, Fabrication, Pipelines etc.
- Industrial Unit Installation, Fabrication & Erection
- Steel Structure Bridge
- Pre-fabricated Buildings, Structures
- Tower Fabrication and Erection
- Tank Fabrication and Erection
- Sand Blasting Works
- Painting & Coating
- Pressure Test & Flushing
- Drilling Site construction & Preparation



Manpower

Personnel

The contractors obligations in the event of the award of the contract including:

a) Administrative Staffs	10 persons.		
1. Technical Staffs	10 persons.		
2. Chief Engineer	01 person.		
3. Sr. Engineers	05 persons.		
4. Site Engineers	05 persons.		
5. Instrument Technician	10 persons.		
6. Scrub folders	10 persons.		
7. Supervisory personnel	05 persons.		
8. Welder (2G, 3G, 4G, 5G, 6G & Argon)	30 persons.		
9. Fabricator	10 persons.		
10. Fitter	15 persons.		
11. Gouzerman	04 persons.		
12. Skilled Worker			
i) Welder Helper	15 persons.		
ii) Fitter Helper	15 persons.		
iii) Grinder	15 persons.		
iv) Fabricator Helper	15 persons.		
13. Rigger	20 persons.		
14. Non Skilled Worker	20 persons.		
15. Electrician	07 persons.		
16. Machine Tools Operater	15 persons.		
17. Generator Operator	02 persons.		
18. Compressor Operator	02 persons.		
19. Mechanics	20 persons.		
20. Crane Operator			
21. Bake man			
b) Current Employed			
Adiministrative Sta	05 persons.		
Supervisor	01 person.		
Foreman	01 person.		
		Welder	12 persons.
		Fitter	06 persons.
		Fabricator	04 persons.
		Gouzerman	01 person.
		Skilled Worker	12 persons.
		Non Skilled Worker	18 persons.
		Rigger	04 persons.
		Electrician	01 person.
		Machine Tools Operator	10 persons.
		Generator Operator	02 persons.
		Compressor Operator	01 person.
		Mechanic	01 person.
		Engineer	01 person.
		c) Supervisor	01 person.
		Foreman	01 person.
		Welder	06 persons.
		Fitter	06 persons.
		Helper (Skilled)	10 persons.
		Grinder	04 persons.
		Rigger	06 persons.





Quality Assurance And Control

a) Quality Policy & objectives :

Quality policy:

Our quality policy is to satisfy customer is our top priority to fulfilling all the contractual agreements.

Quality Objectives :

- 1) To achieve complete confidence & satisfaction of our customer through quality services we provide.
- 2) To achieve zero discrepancy in our services.
- 3) To continually improve our customer service through training customer feedback, review meeting, records & statistics.
- 4) To sustain continued growth of local requirements & export in the expounding market through quality products, customer care & strict adherence to delivery schedules.

b) Quality Assurance & Control :

Quality Certificate :

Ensure qualified welding shop (certificate attached). Maintain a good quality services.

Quality assurance plan:

Mazada's Quality Management team will assurance the quality.

All the job carried out will be separately recorded & verified under following specifications :

- 1)
 - a. Pipe fabrication & installation specification.
 - b. Welding & process specification.
 - c. Painting & coating specification.
 - d. Pressure test & flushing.
- 2) The following quality records will be maintained.
 - a. Responsible for welding procedure process material. & test project supervisor.
 - b. Post weld & heat treatment.
 - c. NDT testing & records.
 - d. Hydrostatic test & records.
 - e. Safety briefing or meeting by S. O.
 - f. Technical Meeting.
 - g. Inspection or Monitoring.
 - h. Review.
 - i. Back up welders, fitters, fitters, grinder, manpower, store & stock-store keeper.





Mazada Power Limited

Power that drives your life...

Mazada Power Limited is specialized in import & marketing of Diesel, HFO & Gas Generators in Bangladesh. Our endeavor is to build close relationship with our clients through quality service and support.

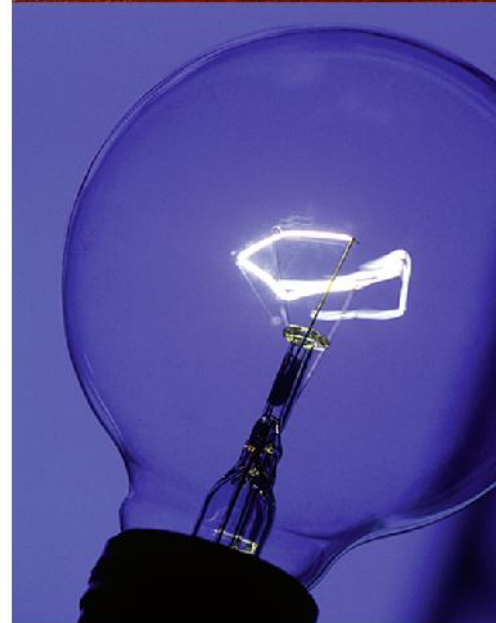
To gain maximum market share as a 'Preferred Power System Provider', Mazada Power Limited e orts to supply high quality Gensets with low consumption at a competitive price with good after-sales services.

While pacing our stride towards this goal, Mazada Power Limited continuous perseverance has won over the trust and confidence of large foreign corporations that led to awards of distributorship of world renowned German origin MBH brand Generator for clean and reliable power.

The MBH brand Generator, Engine, Alternator and Control System all are German origin. Our rating covers from Diesel Generator 11 KVA to 3000 KVA, HFO Generator 859 KVA to 4400 KVA and Gas Generator 42 KVA to 1740 KVA.

As well as we are associated with foreign principals for supply, erection & commissioning of Diesel Power Plant, Heavy Fuel Oil (HFO) Power Plant, Natural Gas or in Dual Fuel mode (Natural Gas / Liquid Fuel Oil) Power Plant and Thermal Power Generation Plant on turnkey basis.

Depending upon availability of fuel such as Natural Gas, Diesel, HFO, Coal, Biomass, Renewable Energy viable solution is o ered to the end customs, which





Power Generator :

Mazada Power Limited is the sole distributor of modern MBH GmbH, who is the leading manufacture of Diesel Engine Generator, HFO Engine Generator and Gas Engine Generator in Germany. Our rating covers from Diesel Generator 11 KVA to 3000 KVA, HFO Generator 859 KVA to 4400 KVA and Gas Generator 42 KVA to 1740 KVA. We are actively engaged in sales and marketing of power generating equipment. The aim of this division is to provide reliable, safe, and environmental friendly power to the industrial, commercial, and residential facilities. The division covers the activities throughout the country and significantly contributing to the country's power engineering, management, generation, and distribution system. Our main focus is to ensure round-the-clock after-sales service anywhere through

Scope of delivery can vary depending on customers' requirements. Those are-

- EES : Engineering, Equipment Supply
- EPC : Engineering, Procurement, Construction
- BOT : Build, Operate, Transfer
- BOO : Build, Operate, Own
- O&M : Operation & Maintenance
- E & F : Erection & Fabrication





Power Plant :

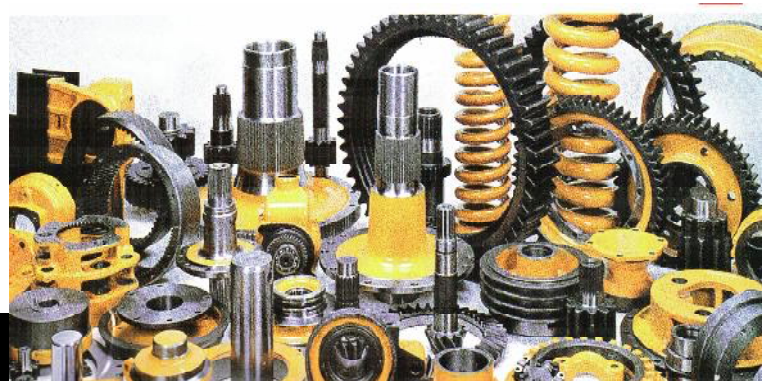
Mazada Power Limited are associated with foreign principals for supply, erection & commissioning of Diesel Power Plant, Heavy Fuel Oil (HFO) Power Plant, Natural Gas or in Dual Fuel mode (Natural Gas / Liquid Fuel Oil) Power Plant and Thermal Power Generation Plant on turnkey basis. We are one on the reliable EPC contractors Partner for power sector.

O&M :

Mazada Power Limited has grown in to a full-fledged Operation & Maintenance service provider of power plants in our country. Our ongoing evolution has its roots in our commitment to provide the latest cost-effective and world standard practice to the power generation industries. Fusing as expert in our field and our pledge to provide excellence services, we are confident to ensure optimum efficiency and reliability of your plant performance.

Spare Parts :

We have ready stock full range of spare parts for our MBH Gen-sets. Our extensive stock range does not just end at our core products, we also stock other brands for generator and power plant. We are reliable supplier of spare parts for any kind of Power Plants.





Mazada Shipping Line Limited

Mazada Shipping Line Limited is engaged in Shipping Sector. Well managed with a team of some young and energetic expert hands. Active in Shipping Agency business, Ships Sale & Purchase for Second Hand & Recycling Industry or Demolition, Cash Buying, Ship Broker, Ship Chartering, Ship Manning and other Projects handling etc. We are widely recognized as the specialist in all kind of shipping services at Chittagong & Mongla Port.

We undertake all kind of shipping activities i.e. Port Agency, Owners Protecting Agency, Import-Export of containerized and bulk cargo, Supply of ship spares, Ship Repair, Ship Chandler, Supply of bunkers & fresh waters, Provision & bonded stores & delivery of demolition vessels on behalf of sellers & all other shipping services in our region as per our principals requirements. We are in a position to purchase scrap ships through our international network with Ship Owners and Ship Brokers as we maintain strong relationship with some very potential cash buyers and Ship Breakers. There is huge demand of demolition ships at Chittagong Ship Breaking Yard, Bangladesh.

The company is equipped with all the facilities and the infrastructure to provide the best services to its clients. Our appeal lies in efficiency, promptness in work, economical handling and clearing of vessels and crew management. We have earned very prestigious name in the demolition agency field.

We maintain long-term and mutual beneficial relationship with our clients and business partners. We understand that our success depends upon our principal's/partner's satisfaction & also our goal is to provide the high standard customer satisfaction.



Our services in Shipping Sector:

- Shipping Agent / Port Agent
- Ship Broker & Ship Chartering
- Ship Sale & Purchase, New, Second hand and Demolition
- Cash Buyer of Ships for Recycling industry or Demolition
- On shore works, Other Projects handling etc.
- Ship Manning
- Container Handling, NVOCC Operation
- Ship & Oil Rigs Repair.
- Customs Brokerage (C&F)

Port Agent :

Mazada Shipping Line Limited is engaged in Shipping Sector as your shipping agent in Bangladesh. We have a very strong team of shipping background, who can handle any kind of vessels in Chittagong and Mongla Port. We can provide you the best services with a very competitive rate. We are also eager to handle your NVOCC line in our country.

Sale & Purchase :

Mazada Shipping Line Limited is actively engaged in Ship Sale & Purchase for second hand and recycling industry or demolition. We maintain strong relationship with most of the top ship breakers in our country. FYKI, we can arrange payment by cash or irrevocable L/C at sight and we are reliable for the demo vessels smooth delivery.





Ship Chartering :

We are one of the enlisted broker for Bangladesh Shipping Corporation (BSC), who is inviting International Freight Tender every month on regular basis for transport Oil & Dry Cargo from abroad to Bangladesh. We are representing the foreign ship owner/ Ship operator for the international freight tender as local partner.

Freight Forwarding :

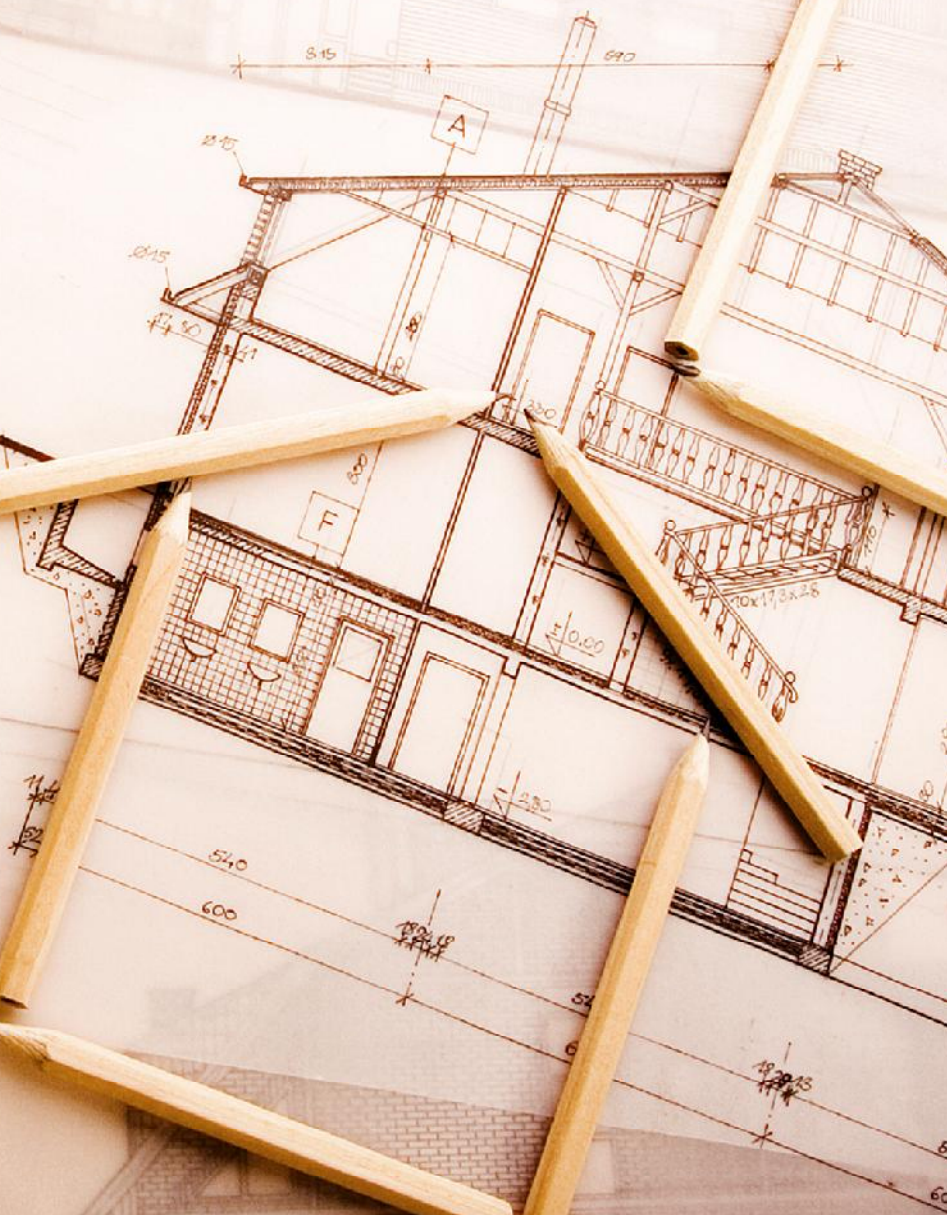
We are specialized in Sea/ Air Cargo, Project Cargo, and Break-bulk Cargo. We are engaged in multi-cargo consolidation and NVOCC operations to / from Indian sub-continent, South East, Middle East, Far East, Europe and USA East & East coast Ports. We are also engaged in total transportation and custom brokerage having a vibrant network covering all custom points in the Country. We are quite professional in shipping sector and the members of our Management team are thoroughly reliable in Shipping.

Customs Brokerage :

Mazada Shipping Line Limited associate with High Speed Logistics for Clearing & Forwarding (C&F) activities as a customs broker. We have professional team & we are specialist for Customs clearing at all major ports and airports.



37,5cm
2cm
3cm
ceramika (glazura)
cemenowa 15cm
słupowa 3cm
ładowa 8-15 5cm
5cm
5cm
10cm



30
31
32
33
34
35
36
37
38
39
40

Mazada Landmark Limited

we build today, without compromising tomorrow...

Mazada Landmark Limited is engaged in the Real Estate industry, with property development & Construction in over major cities across the country. The Company undertakes Land & Housing Development, Real Estate Investment, Construction of Multi-storied Residential Building, Shopping Malls & Commercial Complex etc. with operations spanning every aspect of the real estate business. Mazada Landmark Limited has a diversified portfolio, which includes Integrated Township Projects, Infrastructure & Industrial projects, BOT Projects, Property Management, Hotels, Amusement Park and other projects.

We believe however, that we are really in the business of development. Seeking to meet the needs of the present generation, without compromising the future of the generations to come. The core team at Mazada Landmark Limited has a proven track record for excellence experience and is widely recognized as pioneer of best global practices, transparency, a value-driven approach, customer centricity and reliability in the real estate & construction industry. Mazada Landmark Limited is the first Real Estate Company to establish an Asset Management model of development in Bangladesh in line with contemporary global practices. It has been at the forefront of the real estate industry, following its motto "Turning Dreams into Reality" through building world-class hi-tech projects. Today Mazada Landmark Limited with its high commitments has become synonym for perfection, innovation, customer satisfaction, transparency and developing high-end luxury, aordable & value for money projects. The Company has adopted quality system standard that integrate technological and design innovations with a strong technical base to provide state-of-the-art real estate options.

Beside this, Mazada Landmark Limited is the first to have created and implemented the concept of Eco Friendly City, integrating Environment Protection Measures in all projects, with a defined implementation process.

For Mazada Landmark Limited, environment protection and innovative architecture and practices are the standards of today and tomorrow in real estate development.





Land Project :

Mazada Landmark Limited is the flagship company of Mazada Group, which was founded in 2005 to address the ever-increasing housing needs of the citizens. Since the very first day of its inception, we are doing business with reputation and has earned a great deal of trust of people. Some lucrative land projects are coming shortly under the same umbrella of Mazada Landmark Limited.

Civil Engineering :

Mazada Landmark Limited is the construction management arm for all constructional operation of the group is undertaken and completed. Enriched by a pool of highly competent and qualified civil, electrical and mechanical engineers, Mazada has successfully doing construction of all own projects as well as complete solution of other corporate houses with high standard of quality and within the stipulated project completion period. Apart from involvement in its own in house projects, we also involved in the construction of Multi-storied Residential, Commercial, Schools and Hospitals, Architects & Design in private, government and

Property Development :

Mazada Landmark Limited is also constructing apartment project at different location for contributing to mitigate the burgeoning housing need of city dwellers. Our projects are built on joint venture land sharing basis as well as on company's self owned property. Our product portfolio comprises mainly of residential apartments in prestigious and sought-after locations of Chittagong and also includes shops and commercial office space.

Infrastructure Development :

Mazada Landmark Limited is one of fastest growing infrastructure organizations - undertaking holistic regional development, unlocking economic prosperity and creating inclusive & sustainable growth models. Its range of services include integrated design, engineering, material procurement, field services and construction & project management services for infrastructure sector and real estate projects.



Q-HSE

At Mazada Group, we are committed to a "Full Compliance Culture", giving health, safety and environmental matters the highest priority in all of our activities, and which we managed through our comprehensive Quality, Health, Safety & Environmental (Q-HSE) Management System. We recognize that Q-HSE is a fundamental and integral part of everyday business and this is continually communicated to all employees through internal training programmes. We believe that our internal and external training programmes are the key to providing the continuous improvement we seek and strive for, in our effort to achieve ZERO accidents or incidents.

The Mazada Group Q-HSE system equips our employees with all the necessary tools to build, review, revise and document "Safe Systems of Work" for all our work activities. Hazard Analysis, Risk Assessment, Method Statements, Calculation, Lifting Studies, Rigging Studies, and Transporting Studies, are all a part of daily life, written and executed to the best industry standards by trained, skilled and competent staff. We require all employees, contractors, sub-contractors, visitors and any others who may be affected by our operations to share this commitment by complying with our policies and procedures, and to understand that they too have legal and moral obligations to themselves and to one another.

Employees are our most valuable asset and we do our best to ensure that their safety goes beyond the implementation and compliance of regulations, policies, procedures and safety audits. Our commitment to safety does not end with our employees; it also includes the safety of all others who may be directly or indirectly involved in any of our operations.

Mazada Group take great pride in its long history of continuous improvement in all areas of Quality, Health, Safety and Environmental matters. Our commitment to introducing new and better safety systems of work along with the improvement in current systems across our many operational activities reflects our clients' demanding requirements. We continually use our Q-HSE process as a management system for conducting our business with care and professionalism.

Health, Safety & Environmental matters are our first priority and whilst quality, productivity and cost are core business values. We will not compromise Health, Safety or Environmental matters in all our operations. It is through our training, continuous development and involvement of our employees, and the commitment of our management that we will ensure the well-being of everyone at and associated with Mazada.







MISSION STATEMENT

VISION

To be a world class organization in providing high quality, safe and secure services in Heavy Lift & Haulage, Power Generation, Shipping, Real Estate, Infrastructure and Housing industry.

MISSION

To provide Eco Friendly integrating Environment Protection Measures with high-end luxury & affordable projects.

CORE VALUES

WISDOM

We create platform for our staff to showcase their ability and Judgment base on knowledge and experience sharing.

TIMELINESS

We will invest our resources to complete any task within the stipulated time and with utmost Safety.

COMMITMENT

We will train & upgrade our employees and monitor our process to ensure consistent excellence and an appropriate effort to meet the needs of our customers.

Our Commitments

To the Clients

Clients are the most valuable of our assets. We value all of them equally. We focus on each and very detail of our clients' necessity. We analyze, study and translate them into output as per the desire of the clients. As a result, we always fulfill their requirements and, sometimes, even exceed them.

1

To the Vendors

We believe quality delivery is the key to success; and it is our vendors who can ensure that through quality supply. We are committed to ensure equal opportunity to all of our vendors and business partners. We treat all of them with high respect.

2

To Environment

We are fully aware of the growing global awareness towards safety of the ecology. We help conserve resources so that our future generations get an opportunity to live in this world at least in the way we do. We thus, ensure our environment-friendliness in each and every action.

3

To Society

As a conscious business house, we feel we have some responsibilities to our society. The recent establishment of "[Alhaj Shamsul Alam foundation](#)" is a proof of our sense of corporate social responsibility. We are committed to further our social welfare activities in future.

4





Contact Information

Mazada Consortium Limited

Jomir Uddin

Cell : +88-01812-55424

Tel : +880-31-2865313to5, Ext.105

eMail : epc@mazadagroup.com

Mazada Power Limited

Md. Sajjadul Islam

Cell : +88-01733-076933

Tel : +880-31-2865313to5, Ext.106

eMail : power@mazadagroup.com

Mazada Landmark Limited

Joy Gobinda Bhowmik

Cell : +88-01733-076919

eMail : landmark@mazadagroup.com

Mazada Shipping Line Limited

Ahmed Nowshad Chowdhury

Cell : +88-01733-076908

Tel : +880-31-2865313 to 5, Ext.105

eMail : mazada@mazadagroup.com

Finance and Accounts

S M ShahidUddin

Cell : +88-01733-076909

Tel : +880-31-2865313 to 5, Ext.104

eMail : account@mazadagroup.com

General Inquiry

Tel : +880-31-2865313 to 5

Fax : +880-31-2865316

eMail : info@mazadagroup.com



Mazada Consortium Limited
Mazada Power Limited
Mazada Landmark Limited
Mazada Shipping Line Limited

Corporate Office :

Apt. No A-2, House No-11
Road No- 33, Gulshan-1

Dhaka, Bangladesh

☎ +880 2-9881931

☎ +880 2-9881898

✉ info@mazadagroup.com

🌐 www.mazadagroup.com